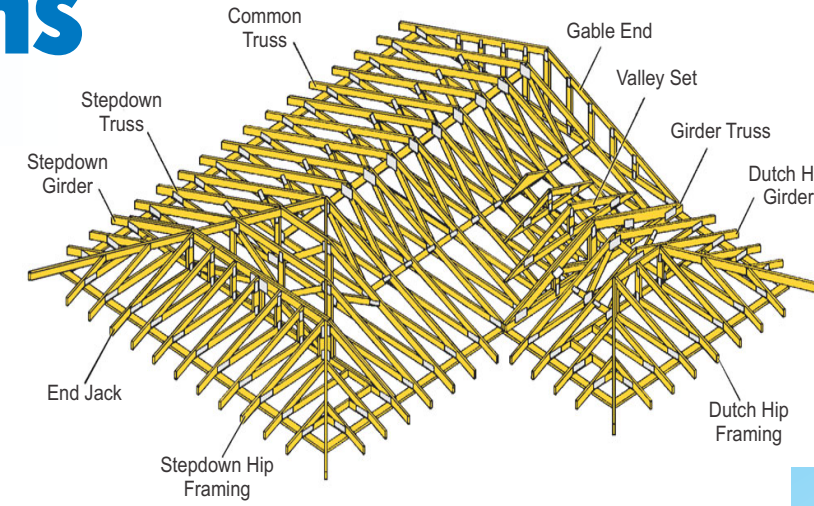


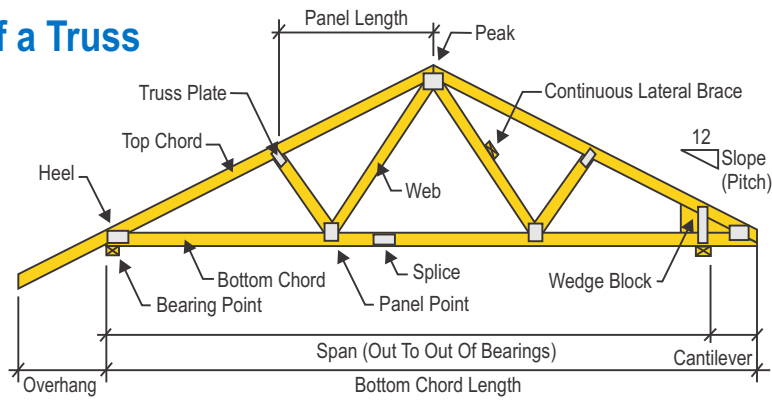
Typical Wood Truss Configurations

www.alpineitw.com

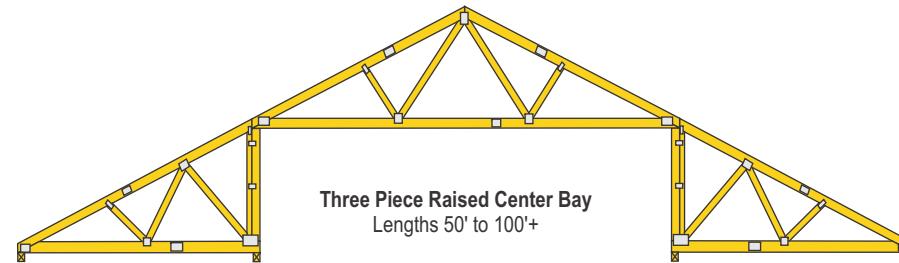
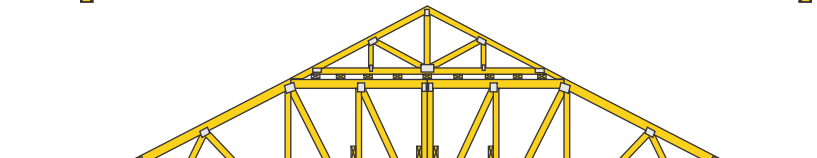
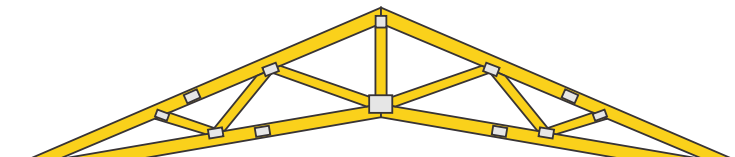
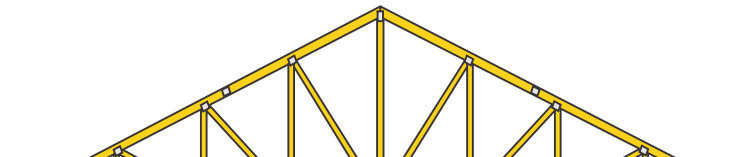
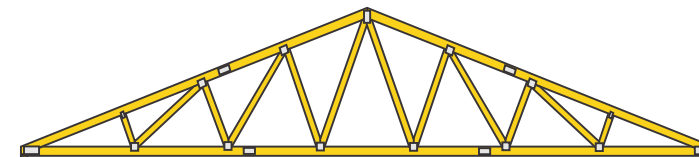
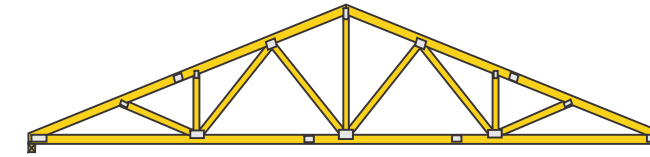
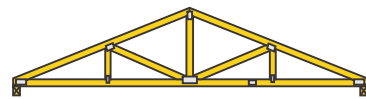
Parts of a Truss Framed Roof



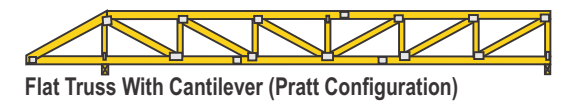
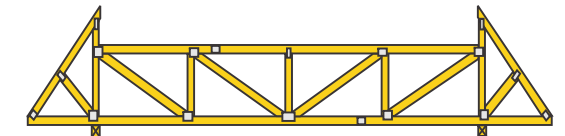
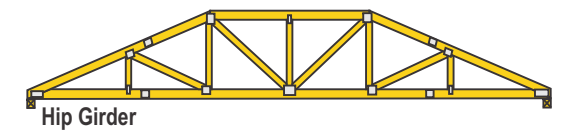
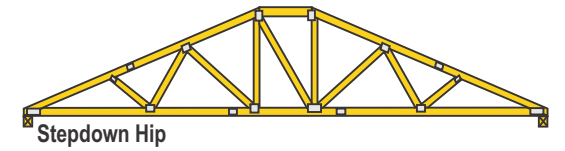
Parts of a Truss



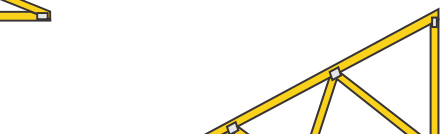
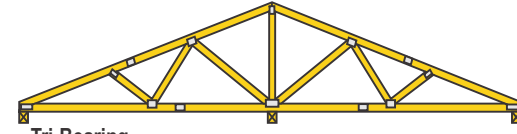
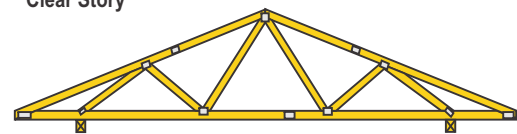
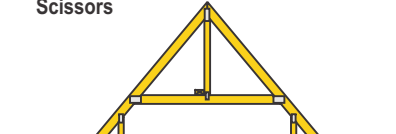
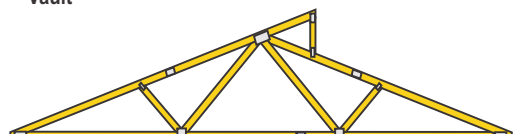
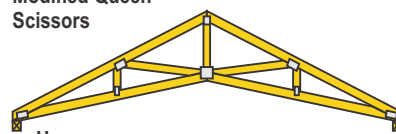
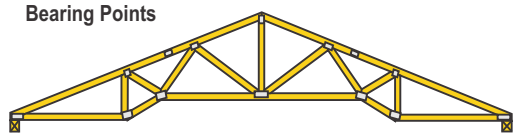
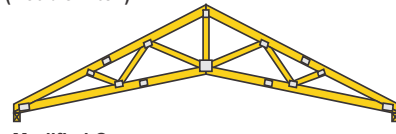
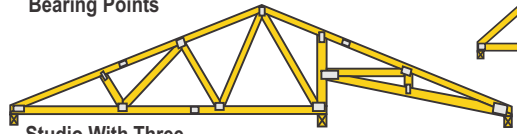
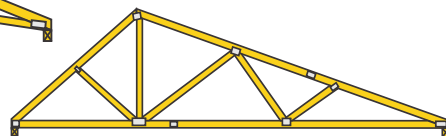
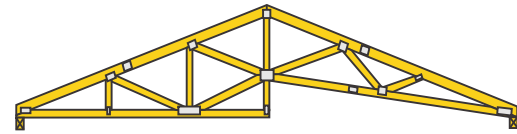
Common Trusses & Their Spans



Typical Flat & Parallel Chord Trusses



Typical Triangular Trusses



Mono Trusses

Wood Roof and Floor Trusses are Environmentally Compatible.

Wood trusses are pre-built components that function as structural support members. A truss commonly employs one or more triangles in its construction. The wood truss configurations illustrated on this chart are a representative sampling. The number of panels, configuration of webs and length of spans will vary according to given applications, building materials and regional conditions. Always refer to an engineered drawing for the actual truss design.

About Alpine: Recognized for its engineering excellence, productivity-enhancing software and equipment solutions, and the industry's best service, Alpine is a leading provider of building component software, metal connector products and equipment to component manufacturers. Since 1966, the company has partnered closely with customers to enhance their business and productivity.

Note of Caution: Large Long Span Trusses require special handling and erection specifications. The installation of wood trusses requires the same high degree of safety awareness as the installation of any other structural material. Spans over 60' may require complex permanent bracing. Please ask your sales representative for more information.